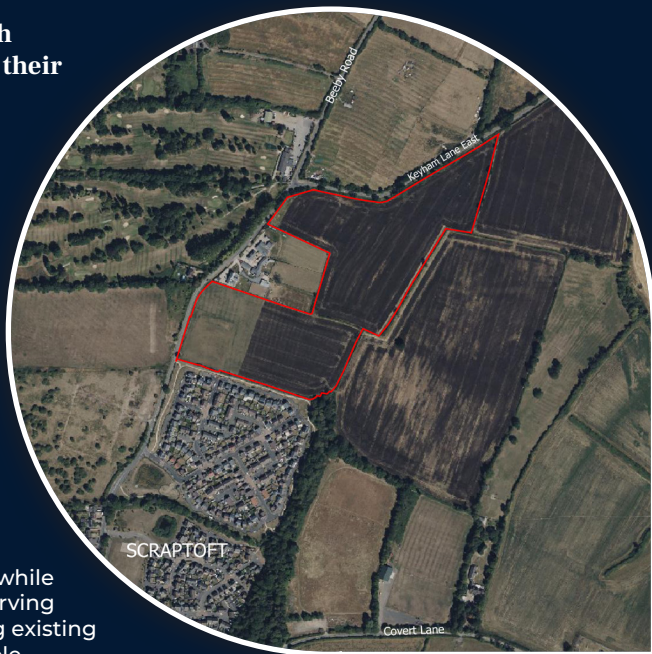


# Land East of Beeby Road, Scraftoft Public Consultation

Bloor Homes are working with landowners to bring forward their emerging proposals for the development of Land East of Beeby Road, Scraftoft to create a new, vibrant and sustainable community.

Bloor Homes was founded in 1969 by John Bloor and remains privately owned by the Bloor family. We have more than 50 years' experience building high-quality new homes across the country. We give thorough consideration to the communities in which we build to create beautiful places that provide a variety of new homes, while respecting local character, preserving natural amenities and protecting existing wildlife habitats wherever possible.



**Please join us at our Online Public Webinar**



Date:

**Thursday 20th  
March 2025**



Time:

**6.00pm to 7.00pm**

Scan the QR code or visit our website below to register for our Webinar.



[www.landeastofbeebyroad.co.uk](http://www.landeastofbeebyroad.co.uk)

Full website and online feedback form live from Monday 10th March 2025.

**BLOOR HOMES**<sup>®</sup>

# Bloor Homes is committed to delivering a high quality designed residential development that is in keeping with the surrounding area and forms an extension to the northeastern gateway into the town.



Up to **200 new homes**, offering a range of house types, tenures and sizes to suit local housing need.



Up to **80 affordable homes** – fully compliant with Harborough District Council policy.



**Car parking spaces** will be compliant with Leicestershire County Council's Highway Design Guide.



Predominantly two storey, **energy-efficient** homes with low-carbon heating.



**Private gardens and amenity space** for every home.



Provision of multi-functional **public open spaces** and recreational routes.

We are still in the design phase and are currently our proposals for the development.



**Sustainable Drainage Systems** (SuDS) and flood alleviation features.



# Quality, sustainable, and sensitively working with the character of the area and into Scraptoft.

and site layout stage, but  
for the site could provide:



**New vehicle,**  
Pedestrian and cycle access  
off Beeby Road access



**Pedestrian & cycle**  
links throughout the Site  
and connections into the  
surrounding area.



**Extensive planting of**  
native wildflowers, trees,  
hedgerows and meadows.



Retention of **existing**  
**trees and hedgerows,**  
as much as possible.



A minimum of **10%**  
**Biodiversity Net**  
**Gain (BNG).**



**EV charging**  
points for every home.



Formal **children's**  
**play space.**



# Get involved and have your say

We are looking forward to sharing our emerging plans with you and answering your questions at our live Public Webinar on Thursday 20th March 2025.

Your local knowledge, thoughts and suggestions are important and will help us further shape the plans for the Land East of Beeby Road ahead of submitting our planning application.

The period for providing your comments and feedback will open on **Monday 10th March** and will close at **midnight on Friday 28th March 2025**.



Example of a Bloor Homes development.

## Contact us

If you would like a hard copy of our consultation materials or have any other queries, please contact us:



Send us an email and we will get back to you as soon as we can:  
[landeastofbeebyroad@stantec.com](mailto:landeastofbeebyroad@stantec.com)



If you want to chat to a member of the team, give us a call: **020 7446 6837**  
(Monday to Friday, 9.30am to 5.00pm)



If you would prefer to put pen to paper:  
**Land East of Beeby Road Community Engagement Team, C/O Stantec, 7 Soho Square, London, W1D 3QB.**

Scan the QR code or visit our website below to register for our webinar and take part in our live Q&A.



[www.landeastofbeebyroad.co.uk](http://www.landeastofbeebyroad.co.uk)

Full website and online feedback form live from Monday 10th March 2025.

**BLOOR HOMES**<sup>®</sup>